

PTS WORLD TAIWAN

ABOUT US

ABOUT US

About PTS World Taiwan:

PTS World Taiwan is the international service of Public Television Service, the sole and leading public broadcaster in Taiwan. We produce impartial and reliable content that entertains, educates, and informs millions of households. Now we aim to deliver our world-class, award-winning programming to a global audience through our newly launched YouTube channel - PTS World Taiwan (<https://www.youtube.com/c/PTSWORLDTAIWAN/>).

Our content is diverse and creative, that includes a wide selection of dramas, documentaries, miniseries, news programs, live streams, and animations with a global appeal.

International audiences can now easily stream our programs on internet-connected smartphones, tablets, laptops, and smart TVs. All of our content is carefully handpicked and curated each month by the PTS World Taiwan team.

PTS World Taiwan offers English subtitles for all programming. Moreover, we offer news broadcasts in English, Indonesian, Vietnamese, and Thai to serve foreigners living in Taiwan. We will continue to expand our services in English and other languages.

LOGO

&

BRAND GUIDELINES

LOGO

- Our logo consists of three parts.
- PTS in black,
- WORLD and a vertical bar in the middle in silver-grey,
- TAIWAN in “Taiwan Pink”, a color common in many local ceremonies,
- all capitalized.



Description: Our primary logo is presented on a light background.

COLOR



VERSIONS

There are two versions of our logo.

One with a light background and one with a dark background.



When the logo is placed on a black background,
the vertical bar “|” and “WORLD” are in white.

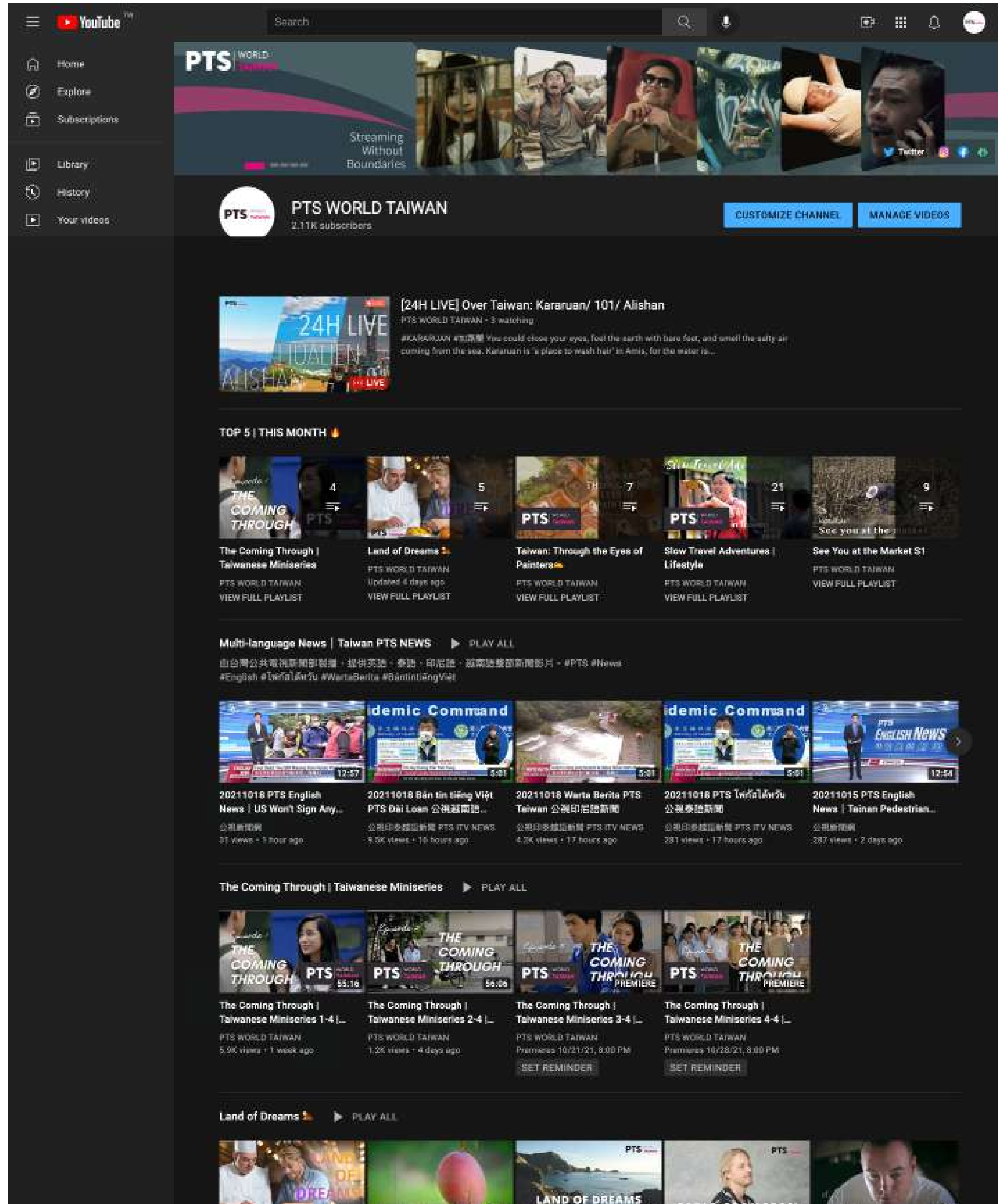


VIDEO WATERMARK

The logo can appear in white when used onscreen as a video watermark.

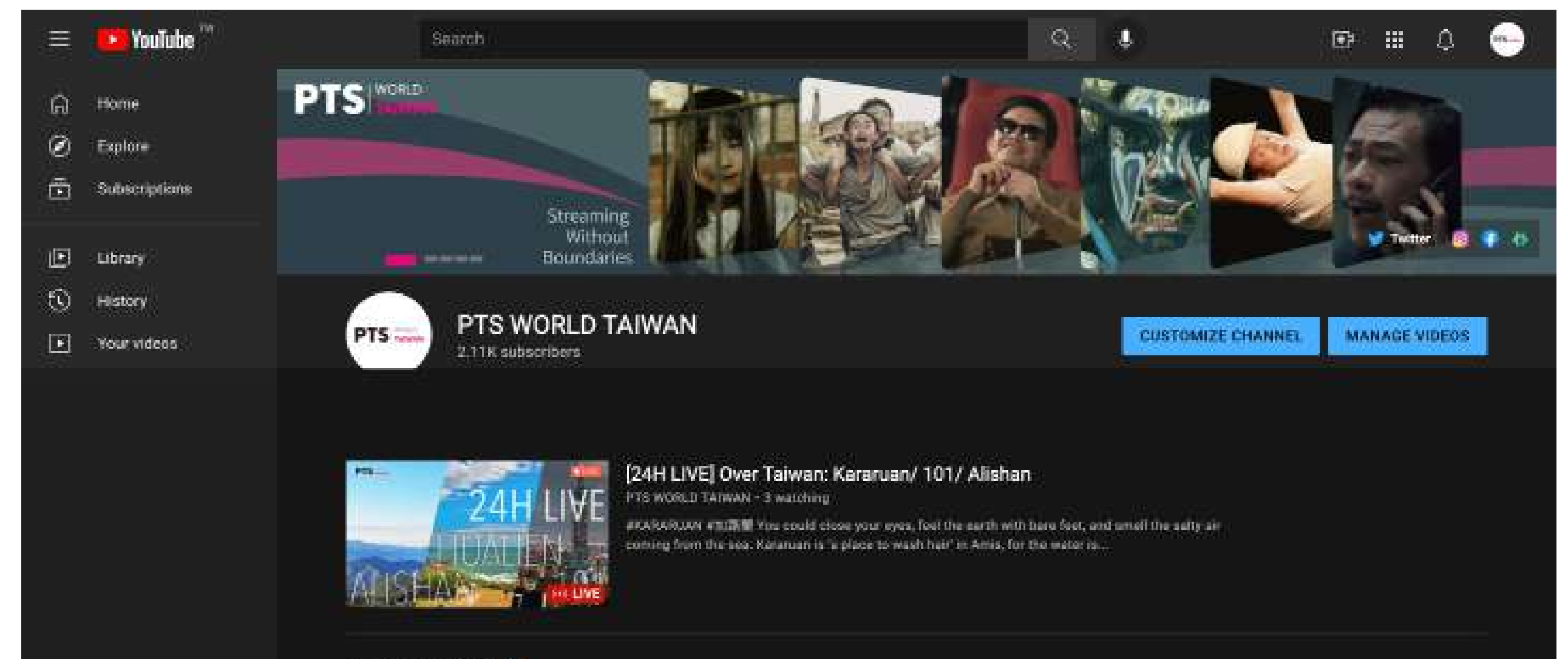


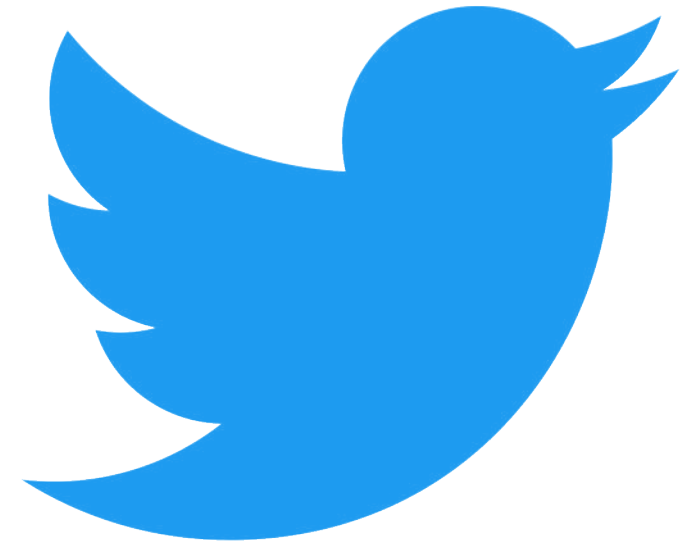
PLATFORM IMAGES



<https://www.youtube.com/c/PTSWORLDTAIWAN/>

Free, unlimited, high-quality programs are available on our YouTube channel.



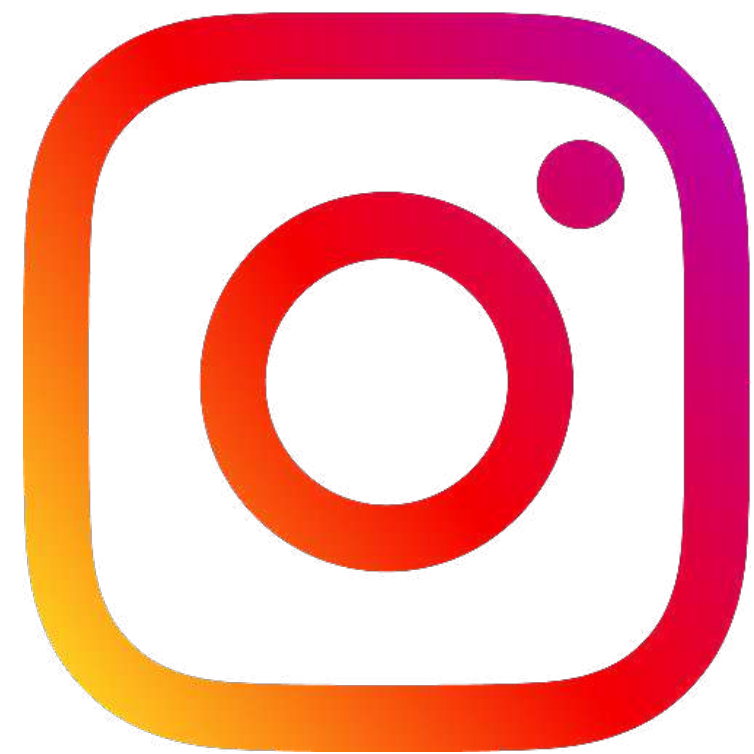


Twitter

@ptsworldtaiwan

Find information about the latest shows, updates, and Taiwan news on our Twitter.

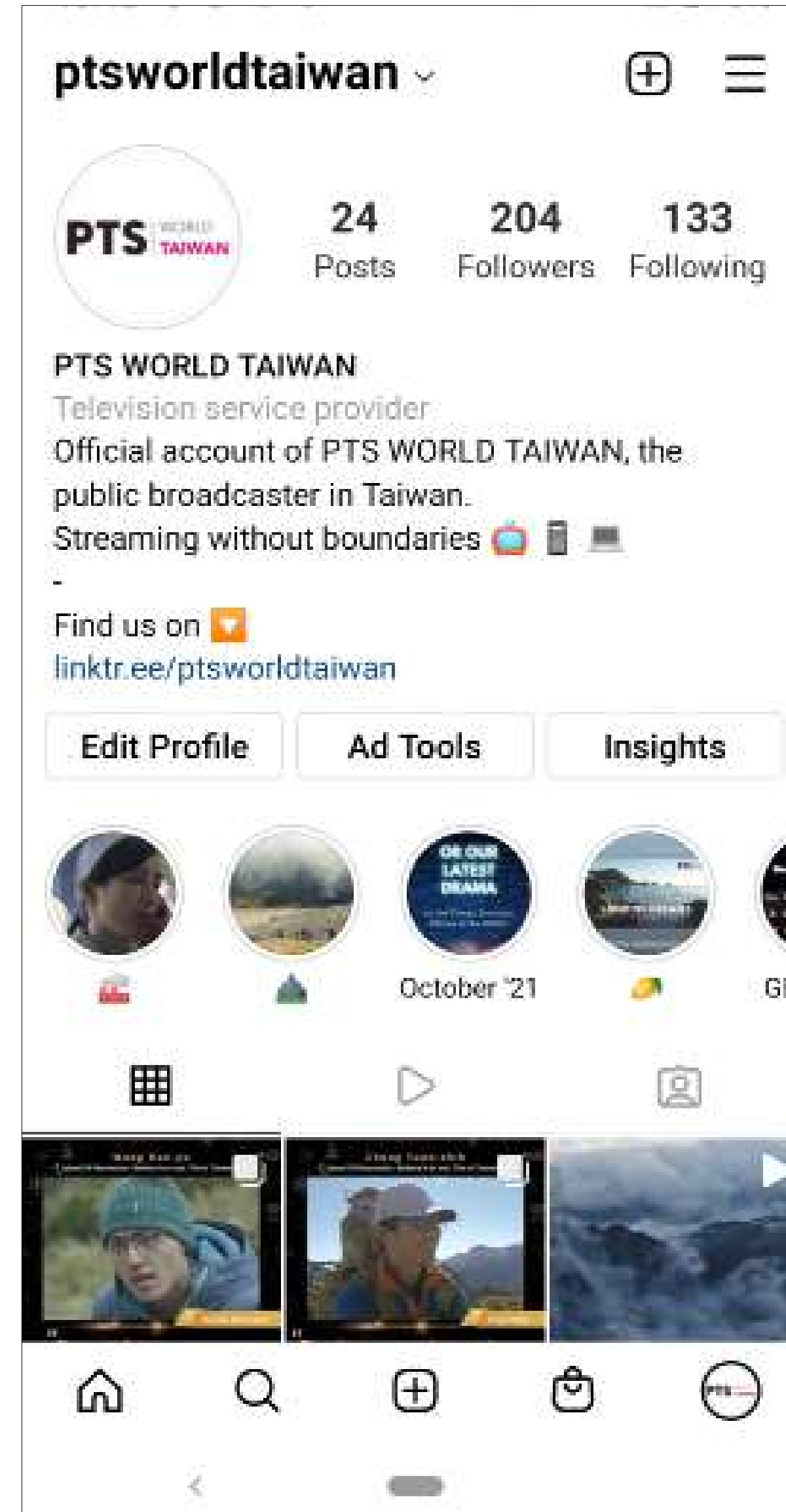




Instagram

@ptsworldtaiwan

Find information about the latest shows, updates, and content related to our programs on our Instagram

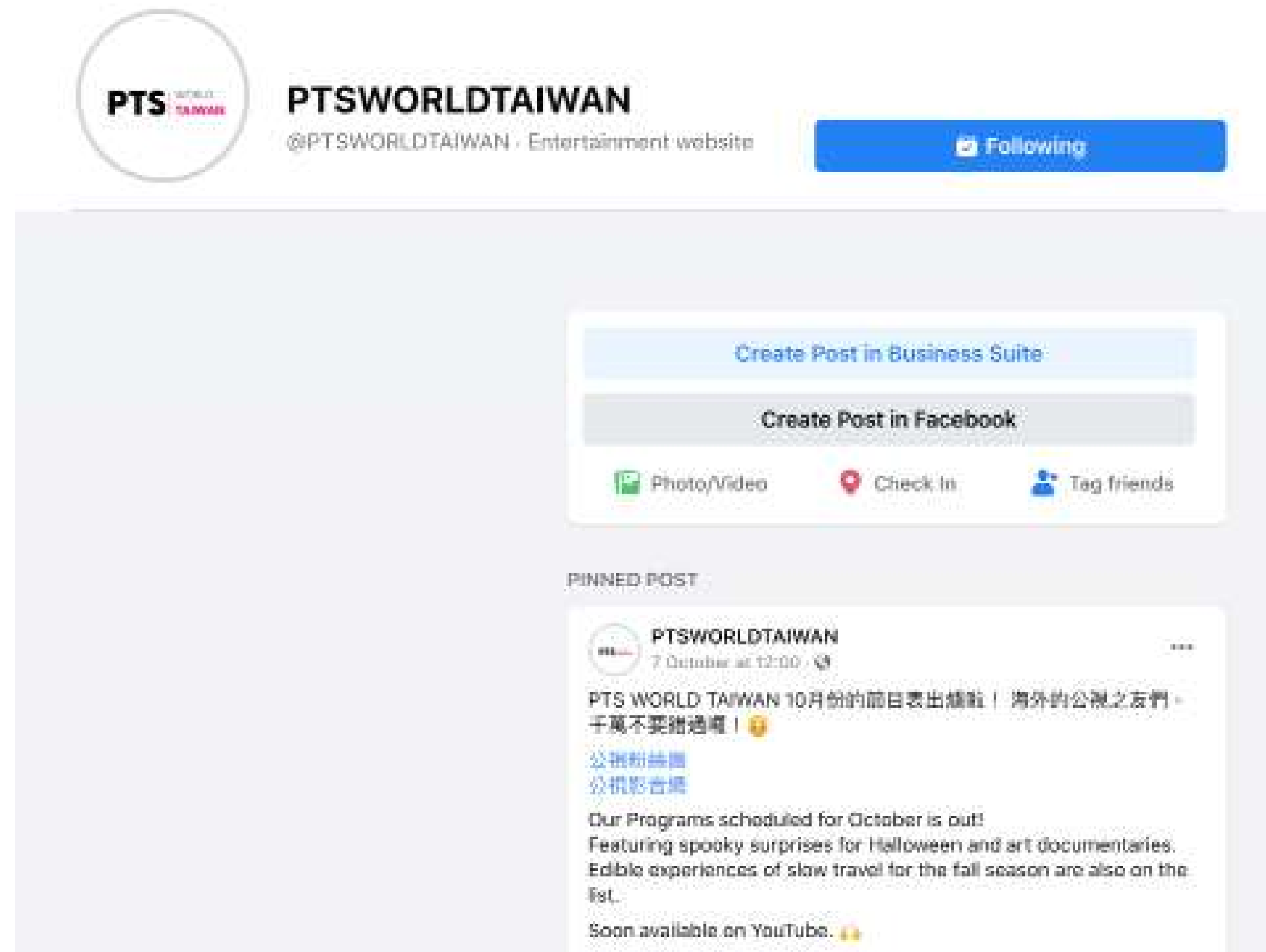




Facebook

@ptsworldtaiwan

Find information about the latest shows, updates, and content related to our programs on our Facebook



FAQ

What is PTS World Taiwan?

PTS World Taiwan is the international service of the Public Television Service, which is the sole and independent public broadcaster in Taiwan.

Our multilingual news broadcasts and English subtitled programs showcasing various aspects of Taiwan are available on YouTube.

What can I find on PTS World Taiwan?

In-depth, high-quality, diverse and creative content about Taiwanese lifestyles, culture, nature, wildlife, food, as well as TV series, dramas and more can all be found on PTS World Taiwan.

Where can I watch your programs?

All of our programs can be enjoyed on YouTube.

Do you have English subtitles?

English subtitles are available for all programming.

Do you have multilingual news?

Yes, we offer news broadcasts in English, Indonesian, Vietnamese, and Thai.

Can I follow you on social media?

You may follow us on Twitter and Instagram @ptsworldtaiwan for the latest news, and bonus content.

How much does it cost?

Our services are completely free.

Is it suitable for children?

Most of our content is family-friendly. In particular, “The Small Big: The Creature Show” and “The Small Big: Let’s Talk Wild” playlists are specially curated for teens and kids.

2021 FEATURED PROGRAMS

PTS DRAMA

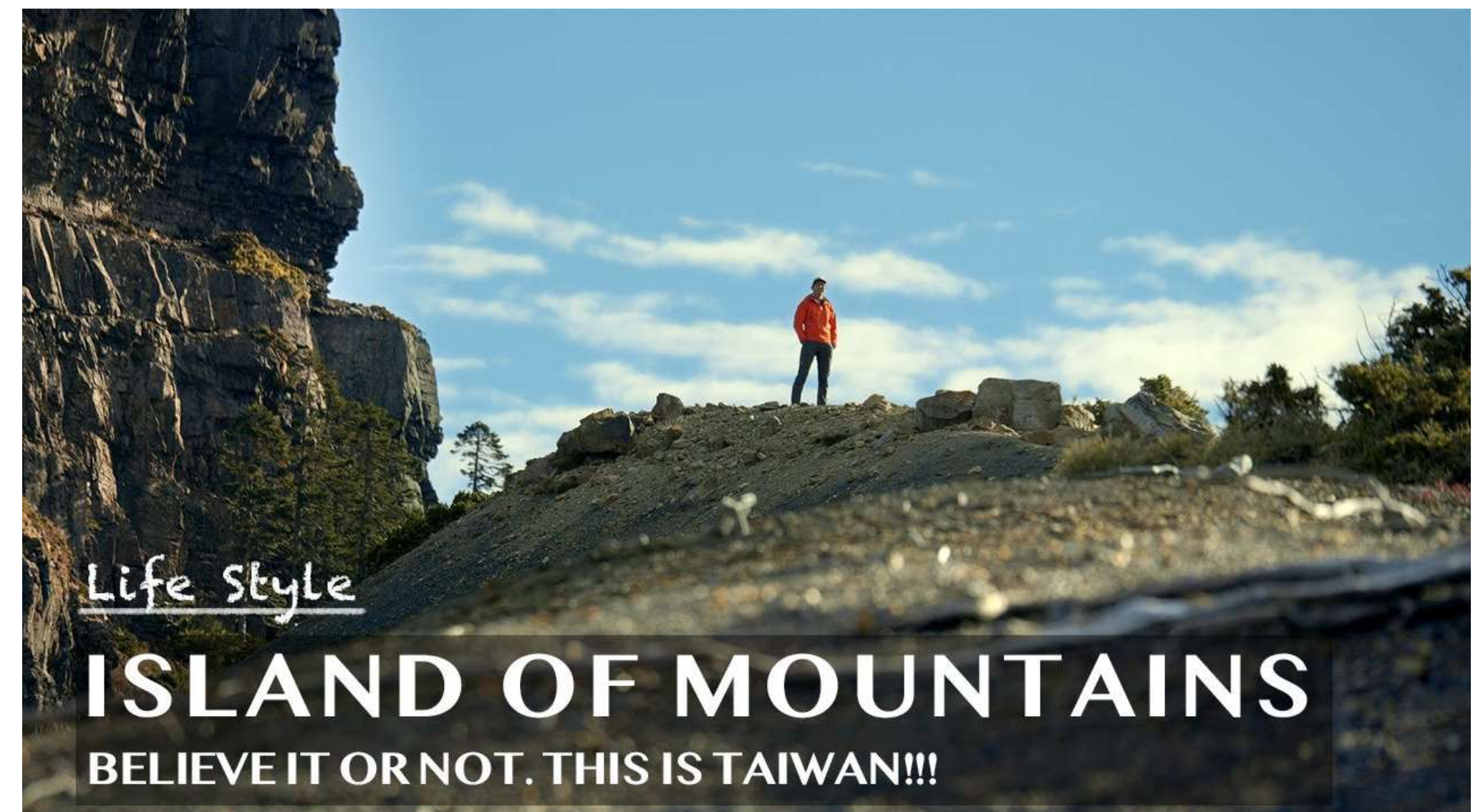
PTS Drama is a collection of shows and films that come from open-call submissions every year. The open submission celebrates creativity in Taiwan through filmmaking.

In the 20 years since its establishment, this collection has grown in scope and diversity and has won over 200 awards at both domestic and international film festivals.



ISLAND OF MOUNTAINS |
BELIEVE IT OR NOT, THIS IS TAIWAN

In this four-episode docuseries, we document the life stories of four young mountaineers, who share their personal connections with four mountains and how those connections have enriched their lives.



THE SMALL BIG | LET'S TALK WILD

Take a trip into the wilderness and meet little creatures that are endemic to Taiwan. This animated program offers an intimate portrayal and distinct new perspective on Taiwan's wildlife. Each episode features a main animal character and is narrated by an enthusiastic young animal lover by bringing voice to Taiwan's endemic species. The program hopes to build awareness about the importance of protecting their natural habitats.

In this 20-minute program, viewers will gain understanding about how these creatures live and the challenges they face for survival. The amazing stories, fun facts, and spirited enthusiasm of the program offer a new window for curious minds to explore Taiwan.



THE SMALL BIG | THE CREATURE SHOW

Get to know the little creatures of Taiwan through intimate five-minute, first-person animations.

What struggles and challenges do they face while trying to survive in the wilderness?



DOCUMENTARY |
REEL TAIWAN |
ARCHIVES REVISITED

Fourteen directors are invited to dig deep into TFI's (Taipei Film and Audiovisual Institute) collection of old Taiwan footage to create new films and breathe new life into TFI's film archives. With cross-generational and cross-cultural perspectives, the directors help us re-examine memories of old Taiwan and imagine the future together.

The short films created as part of this project had their world premiere at the Taiwan International Documentary Festival (TIDF) and were broadcasted on PTS.



THE ETERNAL FARM VILLAGES

The Eternal Farm Villages is a PTS original production. It takes viewers on a deep dive into the modern challenges facing agriculture and looks for answers in different parts of the world.

From the organic rice fields of Taiwan to the vast expanse of vineyards in Napa Valley, from Indonesia's thousand-year "Subak" irrigation system, to the global forefront of vertical farming in the Netherlands, "The Eternal Farm Villages" has brought countless viewers on an in-depth world tour to observe people's innovative approaches to preparing for the future of food and agriculture.



SEE YOU AT THE MARKET | SEASON 1

In addition to documenting Taiwan's food culture, this program also presents diverse stories about fascinating people and places. Program host Professor Afro and his guides take viewers on immersive, multisensory tours to experience food, people and lifestyles in the oldest and most representative traditional markets around Taiwan. In this first season, viewers will take a deep dive into local culture, hospitality and the marvelous diversity found in Taiwan's regional markets.



GUESS WHO | SEASON 11

A beloved PTS classic, Guess Who is one of Taiwan's longest running reality shows. The show invites viewers into the lives of average people to listen to their stories and at the end of each episode, their dream dinner guest arrives for an evening of food, fun and deep conversation.

You never know what kinds of love, hardship, heartbreak and hopes will be shared in each unique, personal, and authentic story told on Guess Who.



OFFICE



Public Television Service, Taiwan

Tel +886-2-2633-2000*9

Fax +886-2-2633-8124

Address No.70, Lane 75, Sec. 3, Kang Ning Rd.,
Taipei 114, Taiwan, R.O.C

Established and regulated by the Public Television Act, the Public Television Service Foundation (PTS Foundation) is a non-profit foundation operating the Public Television Service (PTS), which started broadcasting on July 1, 1998. The PTS is principally funded by the government, and receives donations from individuals and corporations. We belong to the public and work to fulfill our mission of providing public services through independent and impartial programming, aiming to fill the gaps of what commercial television is unable to provide.